

Caring for the marine environment

- Know marine park and reserve zone boundaries and the permitted activities.
- Observe fishing rules and fish for the future. See the *Recreational fishing guide*, available from the Department of Fisheries.
- Quickly return undersize and unwanted fish to the water. Use wet hands or a wet cloth when handling fish and avoid placing on hot, dry surfaces.
- Dispose of litter thoughtfully, especially plastics and fishing line as these can be accidentally eaten by marine animals such as turtles and lead to their long, slow death.
- Anchor in sand to protect fragile reef, seagrass and seaweed communities.
- Stay at least 100 metres from whales. Approach whales parallel to their direction of travel or move greater than 300 metres ahead and allow them to come to you.
- Slow down to less than eight knots in shallow waters, or if you see turtles or dugongs nearby to avoid hitting them.
- You can contribute valuable data to the conservation of Muiron Islands Marine Management Area by taking part in Coral Watch (www.coralwatch.org), a simple, non-invasive method of monitoring coral bleaching and assessing coral health.



More information

Department of Parks and Wildlife
Exmouth District Office

22 Nimitz Street (PO Box 201)
Exmouth WA 6707
Phone: (08) 9947 8000
Email: exmouth@dpaw.wa.gov.au
Web: www.dpaw.wa.gov.au

Milyering Visitor Centre

Phone: (08) 9949 2808
Email: milyering@dpaw.wa.gov.au

Coral Bay Information Hut

Phone: (08) 9948 5131
Email: coral.bay@dpaw.wa.gov.au

Department of Fisheries

10 Maley Street
Exmouth WA 6707
Phone: (08) 9949 2755
Email: headoffice@fish.wa.gov.au
Web: www.fish.wa.gov.au

Emergency contacts

Department of Parks and Wildlife
Phone: (08) 9947 8000 or for
after hours emergencies
(08) 9182 2088

Milyering Visitor Centre
Phone: (08) 9949 2808

Exmouth Police
Phone: (08) 9947 8700

Exmouth Hospital
Phone: (08) 9949 3666

Current at January 2014
This publication is available in
alternative formats on request.

Photos – Tony Howard/DPaW
Cover – Suzanne Long/DPaW



Ningaloo Marine Park Sanctuary Zones and Muiron Islands Marine Management Area



Zone guide

20130316 0014 PDF



Department of Parks and Wildlife
Department of Fisheries



Australian Government
Director of National Parks



Department of Parks and Wildlife
Department of Fisheries

RECYCLE Please return unwanted brochures to distribution points

Sanctuary zones

While people are welcome to fish in most of the waters of most Western Australian marine parks and reserves, some representative areas are usually set aside as sanctuary zones and conservation areas. These areas, where people can look but not take, are one of the most effective ways of protecting the nature conservation values within marine parks and reserves, and this is their primary purpose.

Marine parks and reserves play a vital role in preserving marine biodiversity and an important role in the long-term sustainable use of the living resources of the coastal zone. As all of the components of the marine ecosystem are protected in sanctuary zones and conservation areas, from the corals through to shellfish and table fish, it means that people can enjoy viewing marine life in its unexploited state. This makes them fantastic spots for snorkellers and divers to view marine life.

No-take areas are great places to educate people about biodiversity in the marine environment. The ability to see a range of marine plants and animals and their environment in a natural condition highlights the importance of conservation, and sustainable use. Scientists can also gain an understanding of the full range of species and their levels of abundance in such habitats.

Ningaloo Marine Park protects Australia's largest and most accessible fringing reef. The Muiron Islands Marine Management Area is equally beautiful and important. Please help to keep these areas as pristine as possible by respecting their sanctuary zones and conservation areas.

Please be aware that collecting (including shells and corals) is not permitted anywhere in Ningaloo Marine Park or the Muiron Islands Marine Management Area.

Management zones

Like most marine parks and reserves in Western Australia, Ningaloo Marine Park and Muiron Islands Marine Management Area are multiple-use reserves that cater for a wide range of activities. Multiple-use reserves reflect a balanced approach to conserving the environment by providing a management framework to ensure human usage does not cause significant or long-term damage. Zoning is an important part of the management framework in multiple-use marine reserves. In some areas, fishing activities are partially or totally restricted. These zones, known as sanctuary zones in marine parks and conservation areas in marine management areas, provide reference areas that help us measure the impact of human activity on the environment as well as protect habitats and the wildlife in them.

Know your zones: please ensure you are familiar with the zones and permitted uses within them.

Commercial activities

Additional regulations apply to commercial operators within Ningaloo Marine Park.

- For information regarding regulations or permits within state waters please contact Parks and Wildlife Exmouth on (08) 9947 8000 or email exmouth@dpaw.wa.gov.au.
- For information regarding regulations or permits within Commonwealth waters please contact the Ningaloo Reserve Manager on 1800 069 352 or email marinereserves@environment.gov.au
- For information regarding commercial fishing or fishing tour licences contact the Department of Fisheries.



Ningaloo Marine Park Sanctuary Zones and Muiron Islands Marine Management Area



Marine park zoning

Ningaloo Marine Park is managed under a cooperative arrangement between the Australian Government Department of Sustainability, Environment, Water, Population and Communities and the Western Australian departments of Parks and Wildlife, and Fisheries. Please note that some different regulations apply in the Commonwealth waters (located three nautical miles from the shore) to those of the state waters.

Ningaloo Marine Park (state waters)

Sanctuary zones

Sanctuary zones provide total protection for marine life. They allow visitors to observe marine life in its natural state. No extractive activities are permitted in these zones, which means no recreational or commercial fishing are allowed.

Special purpose (benthic protection) zones

These zones allow visitors to observe marine life in its natural state, however recreational 'troll' fishing is allowed. No other extractive activities are permitted.

Special purpose (shore-based activities) zones

These zones are established alongside some sanctuary zones to allow shore-based recreational fishing for finfish only (no other extractive activities are allowed).

Recreation zones

These zones make up large areas of the marine park. Recreation zones are managed for nature conservation and recreation, including recreational fishing.

General use zones

These zones are managed for nature conservation while allowing for sustainable commercial and recreational activities.

Zone markers

Some sanctuary zones may be marked by yellow in-water buoys or land-based reference posts with directional triangles onshore pointing into the no-take zone. These markers should only be used as a reference guide to line up the zone boundary and the use of global positioning systems (GPS) is recommended at all times (see maps overleaf for sanctuary zone coordinates).

Spear guns and gidgies

These are not to be used in Ningaloo Marine Park between Winderabandi Point and Tantabiddi Boat Ramp and in the Ningaloo Commonwealth Marine Reserve. Species restrictions also apply. Please contact the Department of Parks and Wildlife or the Department of Fisheries in Exmouth for more information.

Marine Management Area zoning

Marine Management Areas provide an integrated management structure over areas that have both high conservation value and intensive multiple use. The Muiron Islands Marine Management Area is one of only two marine management areas in WA.

Conservation areas

Conservation areas within the Muiron Islands Marine Management Area are essentially the same as sanctuary zones. They allow visitors to observe marine life in its natural state. No extractive activities are permitted in these zones, which means no recreational or commercial fishing are allowed.

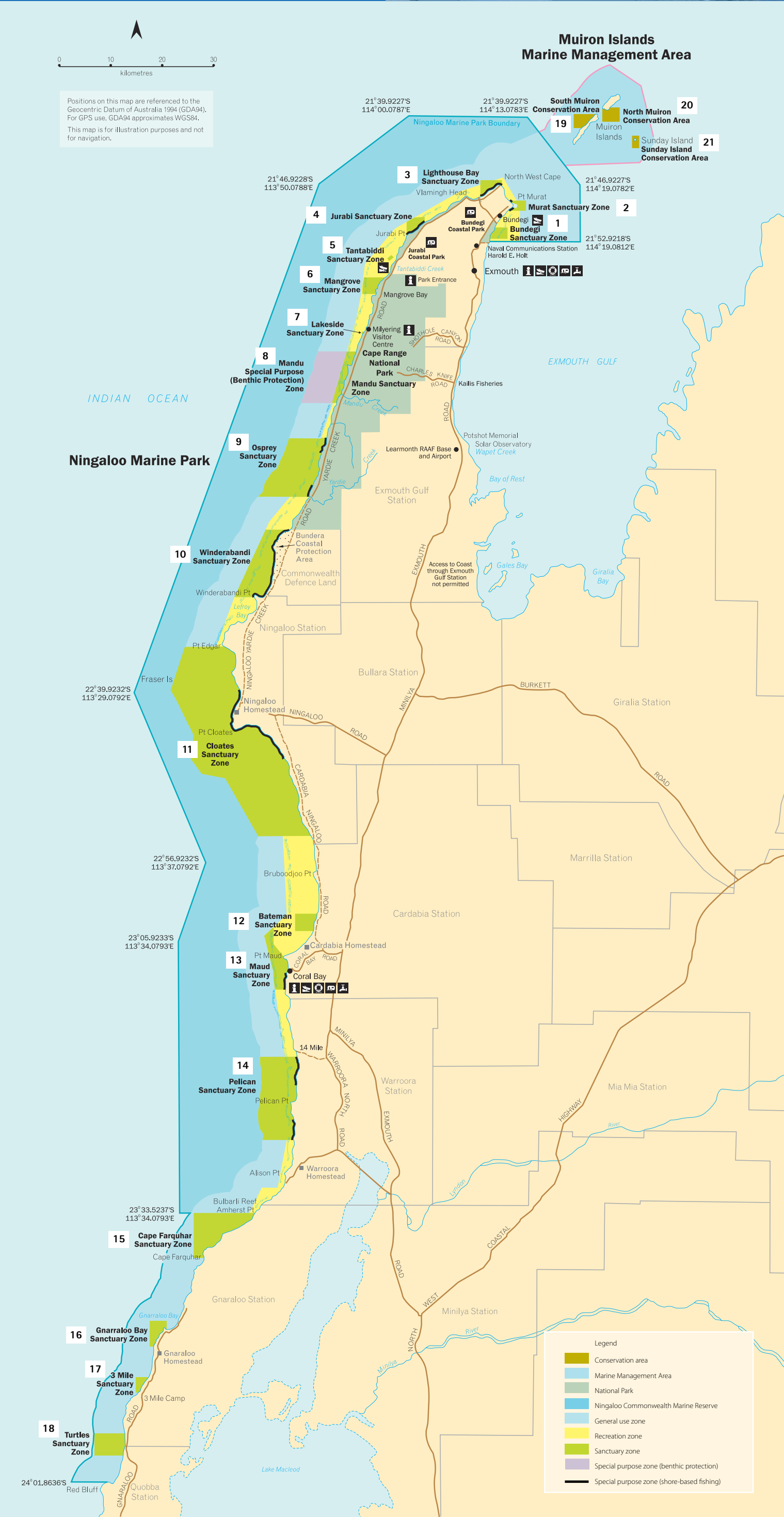
Fishing rules

Fishing rules apply throughout the marine park. Refer to the *Recreational fishing guide* for details. Available from the Department of Fisheries offices or online at www.fish.wa.gov.au.

Ningaloo Commonwealth Marine Reserve

Recreational fishing must be undertaken in accordance with the current authorisation and conditions for recreational fishing available at: www.environment.gov.au/marinereserves/north-west/ningaloo/index.html

These conditions are consistent with the rules that apply in the state component of Ningaloo Marine Park.



Ningaloo Marine Park Sanctuary Zones



Department of Parks and Wildlife
Department of Fisheries

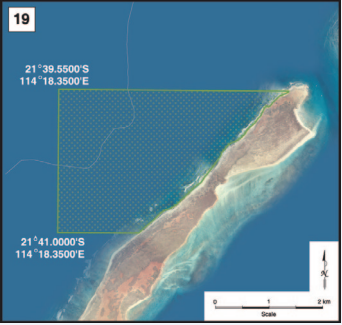


Australian Government
Director of National Parks

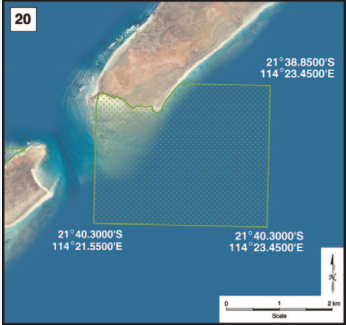
A Muiron Islands Marine Management Area



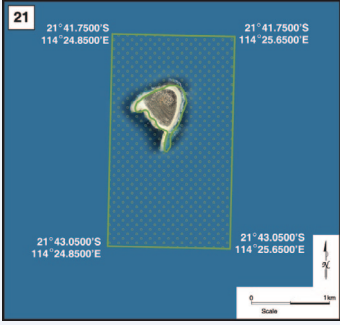
South Muiron Conservation Area



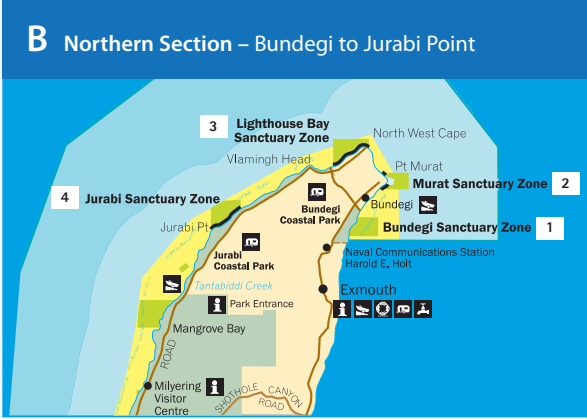
North Muiron Conservation Area



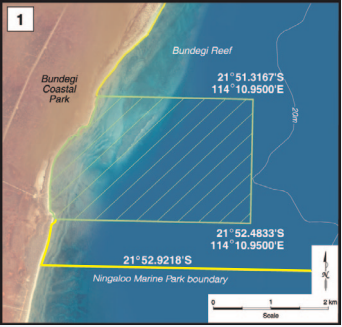
Sunday Island Conservation Area



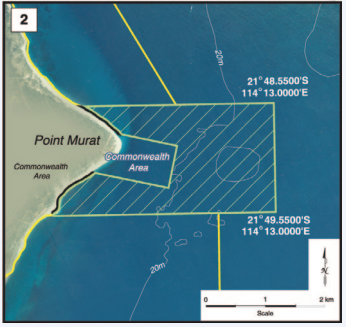
B Northern Section – Bundegi to Jurabi Point



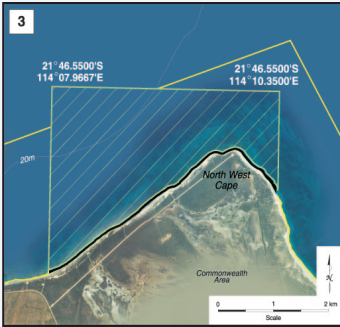
Bundegi Sanctuary Zone



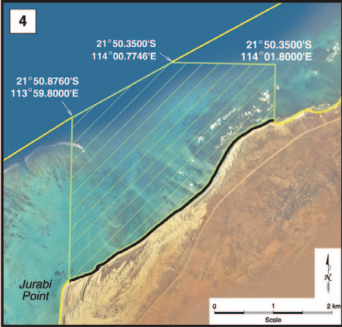
Murat Sanctuary Zone



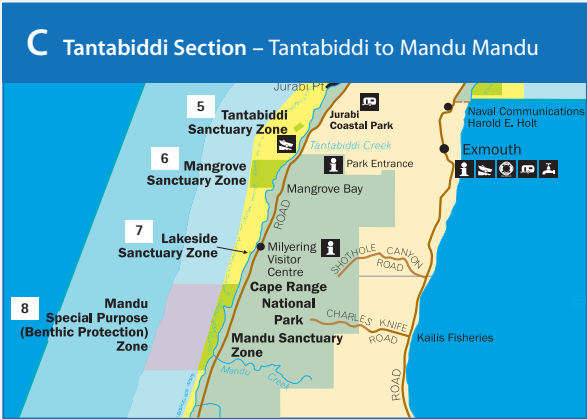
Lighthouse Bay Sanctuary Zone



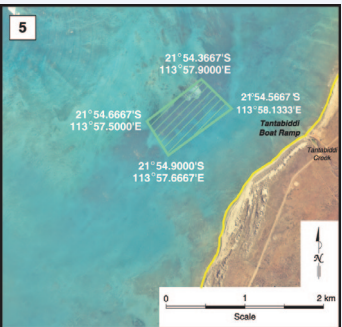
Jurabi Sanctuary Zone



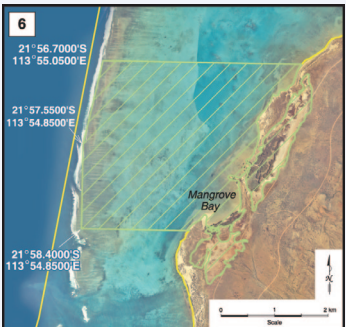
C Tantabiddi Section – Tantabiddi to Mandu Mandu



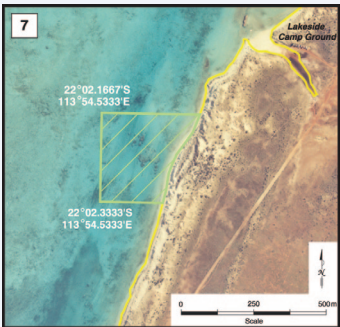
Tantabiddi Sanctuary Zone



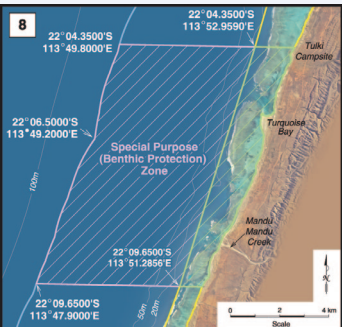
Mangrove Bay Sanctuary Zone



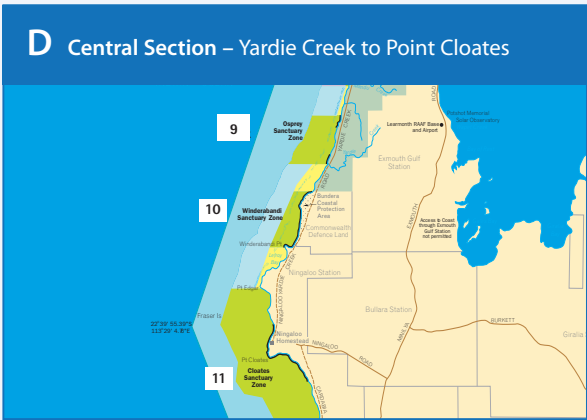
Lakeside Sanctuary Zone



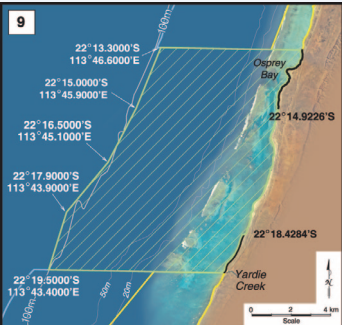
Mandu Sanctuary Zone



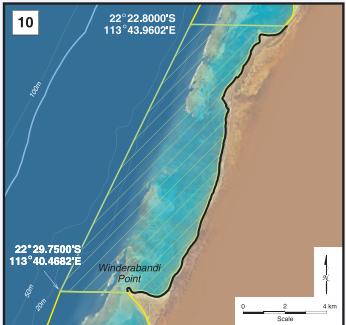
D Central Section – Yardie Creek to Point Cloates



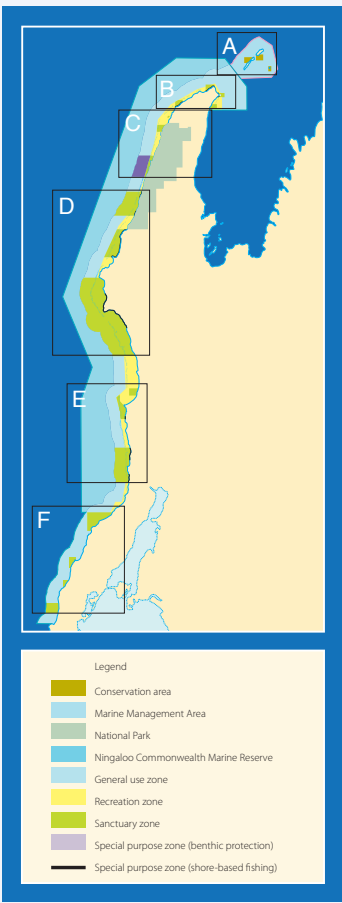
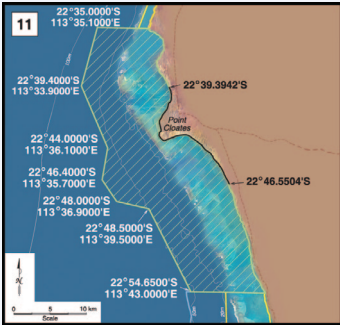
Osprey Sanctuary Zone



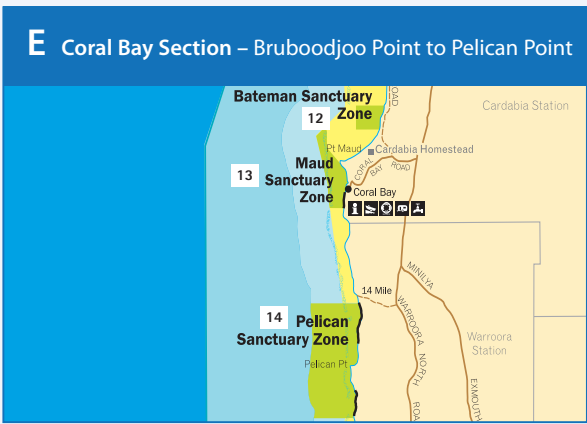
Winderabandi Sanctuary Zone



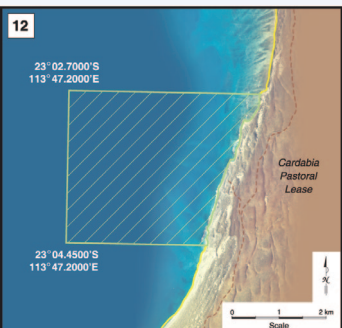
Cloates Sanctuary Zone



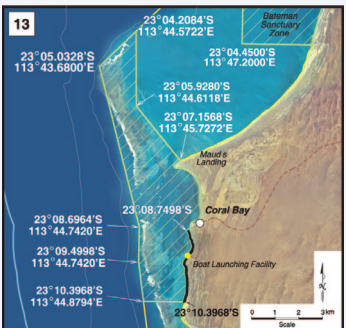
E Coral Bay Section – Bruboodjoo Point to Pelican Point



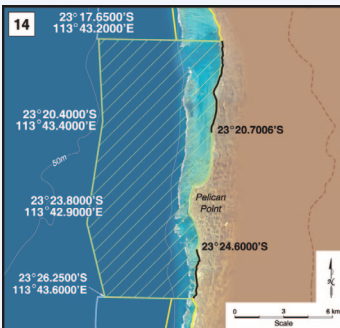
Bateman Sanctuary Zone



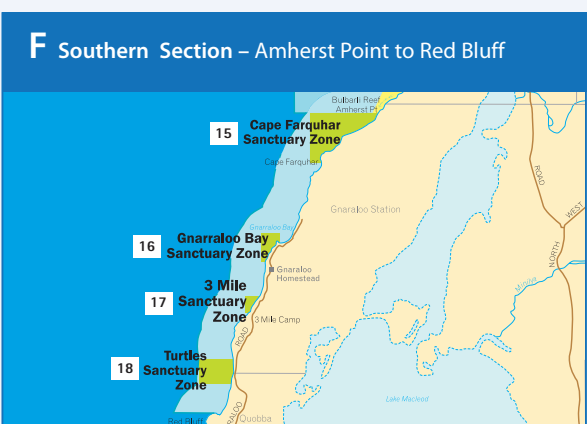
Maud Sanctuary Zone



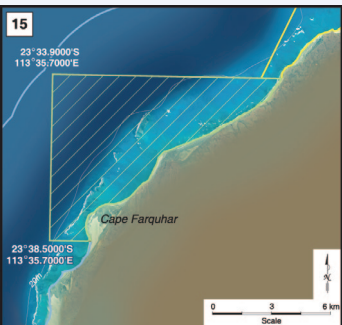
Pelican Sanctuary Zone



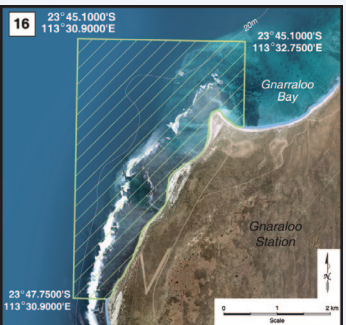
F Southern Section – Amherst Point to Red Bluff



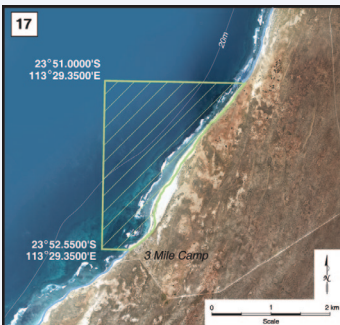
Cape Farquhar Sanctuary Zone



Gnarraloo Bay Sanctuary Zone



3 Mile Sanctuary Zone



Turtles Sanctuary Zone

